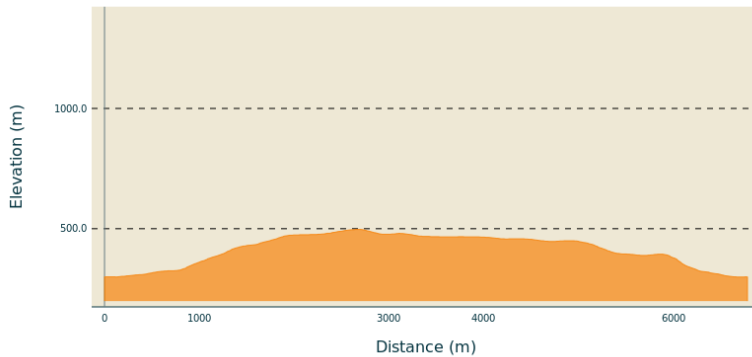


# Around Nieigles, Pont de Labeaume

Ardèche des Sources et Volcans - PONT-DE-LABEAUME

## Altimetric profile



Min elevation 299 m    Max elevation 497 m

## Useful information

Practice : Hike

Duration : 2 h 30

Length : 6.8 km

Trek ascent : 214 m

Difficulty : Medium

Type : Loop

Themes : Châtaigneraie, Patrimoine historique et religieux, Sommet et points de vue

## Trek







**Departure** : Beach parking area

**Arrival** : Beach parking area

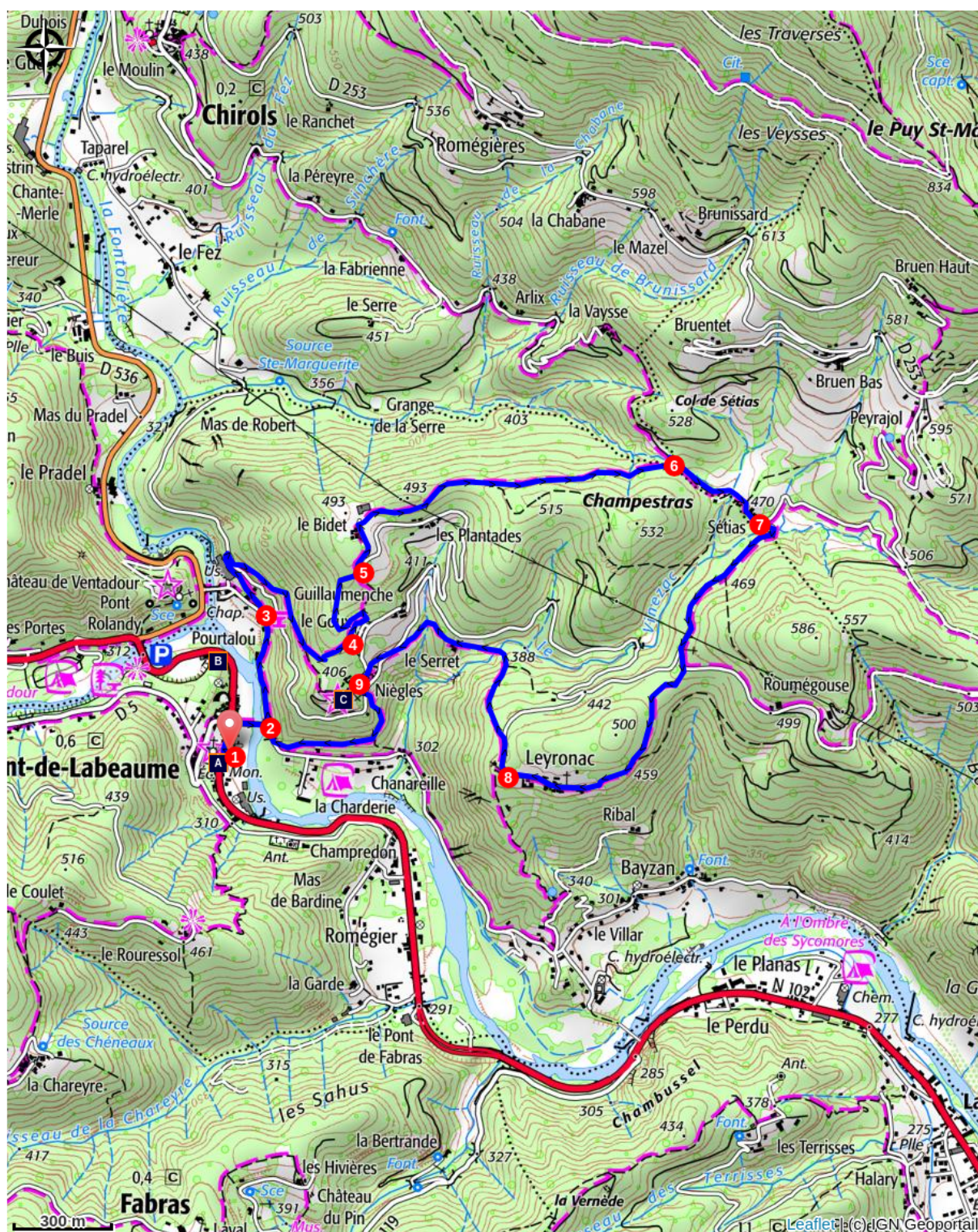
**Markings** :  PR

Cities : 1. PONT-DE-LABEAUME 2. VALS-LES-BAINS

Departure point from the hikes info board on the beach parking area.

1.  Follow the “Col de Sétias 3.5km / Chirols 7.6km” panel. Reach the RN102, take right and carefully walk along it for approximately 100m. Take right and cross the bridge that span the Ardèche.
2. At the end of the bridge, take left in Chirols  direction to Pourtalou.
3. You are now in Pourtalou, follow the “Col de Sétias 2.9km / Chirols 7km” panel. Follow the road on 200m and take the little stairs on the left. Walk along the holm oaks wood, they are an essence feature from the south slopes.
4.  You are at “Le Goux”, follow the “Col de Sétias 2.1km / Chirols 7km” panel. Continue the track observing the terraces or “faïsses” once used for agriculture production. Nice view on the basalt flows.
5. Arriving on the paved road, climb up to the Bidet hamlet. Take the track on the right, pass under the farm and continue on the plantades path.
6.  You are at Sétias col, follow the “Pont-de-Labeaume 4.3km / Lalevade 5.1km” panel. Follow the way to Sétias hamlet.
7.  You are in Sétias, follow the “Pont-de-Labeaume 3.9km” panel. Continue by the road and at the first junction, take left then take the track on the right to Leyronnac hamlet.
8.  You are now in Leyronnac : Follow the “Pont-de-Labeaume 3.2km” panel. Follow the road on 30m and take the track that goes down on the left. Cross the very nice Nieigles hamlet that overhang the Ardèche valley. Go to the roman church that you can visit.
9. Go carefully down the path to reach the road then follow the track below to reach your starting point.





## ! Advices

The loop is delineated by yellow and white painting.

## How to come ?

### Access

From Aubenas, take the N102 in Thueyts direction. From Thueyts, take the N102 in Aubenas direction. In the centre of Pont-de-Labeaume you will find the parking area at the river's edge, starting point of the walk.

### Advised parking

Beach parking area.

**Tourism Office**

[tourisme@sourcesvolcans.com](mailto:tourisme@sourcesvolcans.com)

Tel : 0475364626

<https://sourcesvolcans.com>