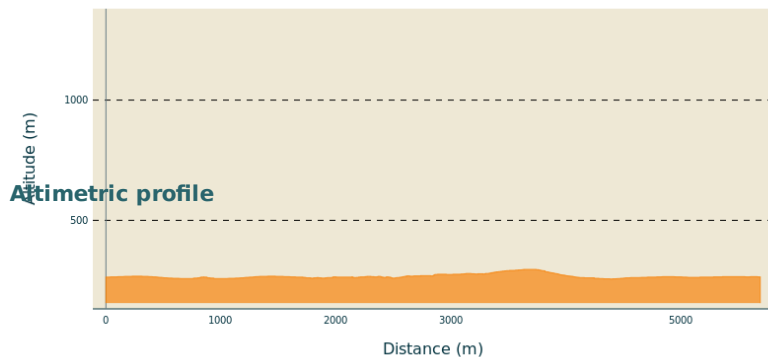


The Joyeuse ledge

PAYS BEAUME DROBIE - LABLACHÈRE



Min elevation 256 m Max elevation 296 m

Useful information

Practice : Hike

Duration : 2 h

Length : 5.7 km

Trek ascent : 95 m

Difficulty : Easy

Type : Loop

Themes : Fauna - Flora, Géologie, Patrimoine bâti

Trek







Departure : La Perle d'Eau swimming pool, Lablachère

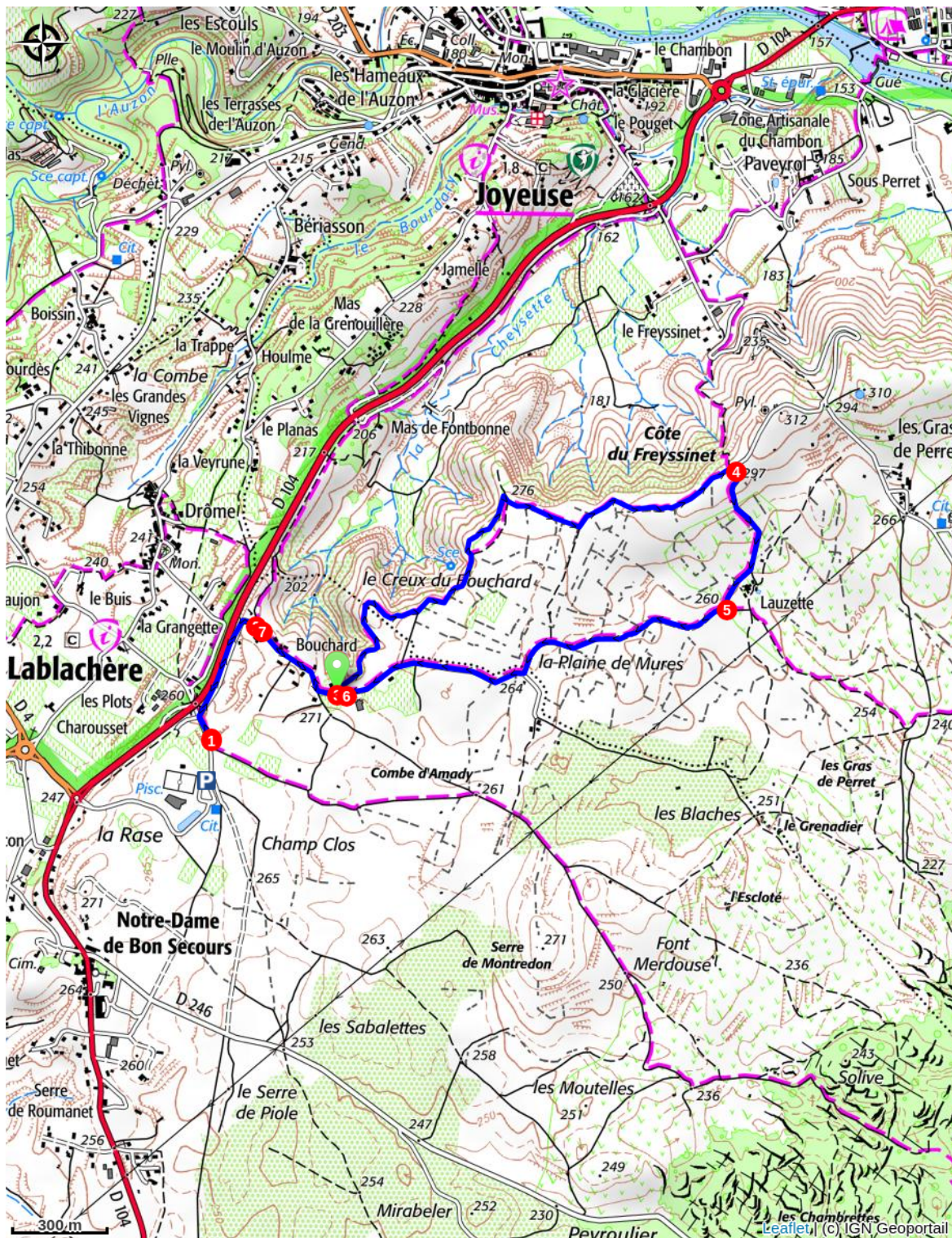
Arrival : La Perle d'Eau swimming pool, Lablachère

Markings :  PR

Cities : 1. LABLACHÈRE 2. JOYEUSE

P - Take the road to La Grangette

-  **La Grangette** - Follow Joyeuse 2,9 km. Continue on the road alongside the bypass until you reach Le Bouchard
-  **Le Bouchard** - Follow St-Alban-Auriolles 9,5 km. Continue on this road until you get to La Plaine des Mûres
-  **La Plaine des Mûres** - Follow Joyeuse 4 km. Follow the trail overlooking Joyeuse until you get to Côte du Freyssinet.
-  **La Côte du Freyssinet** - Follow St-Alban-Auriolles 8,2 km. Keep on this track that takes you to Lauzette
-  **Lauzette** - Follow Lablachère 4,4 km. Continue on this track and then the road until you reach La Plaine de Mûres
-  **La Plaine de Mûres** - Follow Lablachère 3 km. Follow the road via Le Bouchard and then La Grangette until you get back to the start point.



How to come ?

Access

From Les Vans (12 km) or Joyeuse (4km), follow Lablachère then Aquatic Complex.

Advised parking

La Perle d'Eau swimming pool, Lablachère

Information desks

Office de tourisme des Cévennes d'Ardèche

contact@cevennes-ardeche.com

<https://www.cevennes-ardeche.com/>