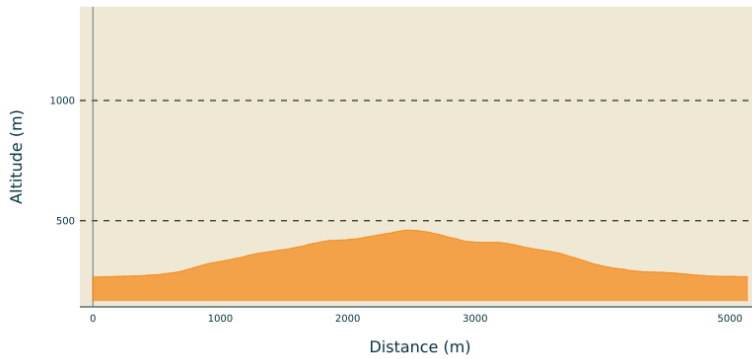


The mines of Lalevade

ARDECHE DES SOURCES ET VOLCANS - LALEVADE-D'ARDECHE



Altimetric profile



Min elevation 266 m Max elevation 461 m

Useful information

Practice : Hike

Duration : 2 h

Length : 5.1 km

Trek ascent : 195 m

Difficulty : Easy

Type : Loop

Themes : Châtaigneraie

Trek

Departure : Car park of the city hall

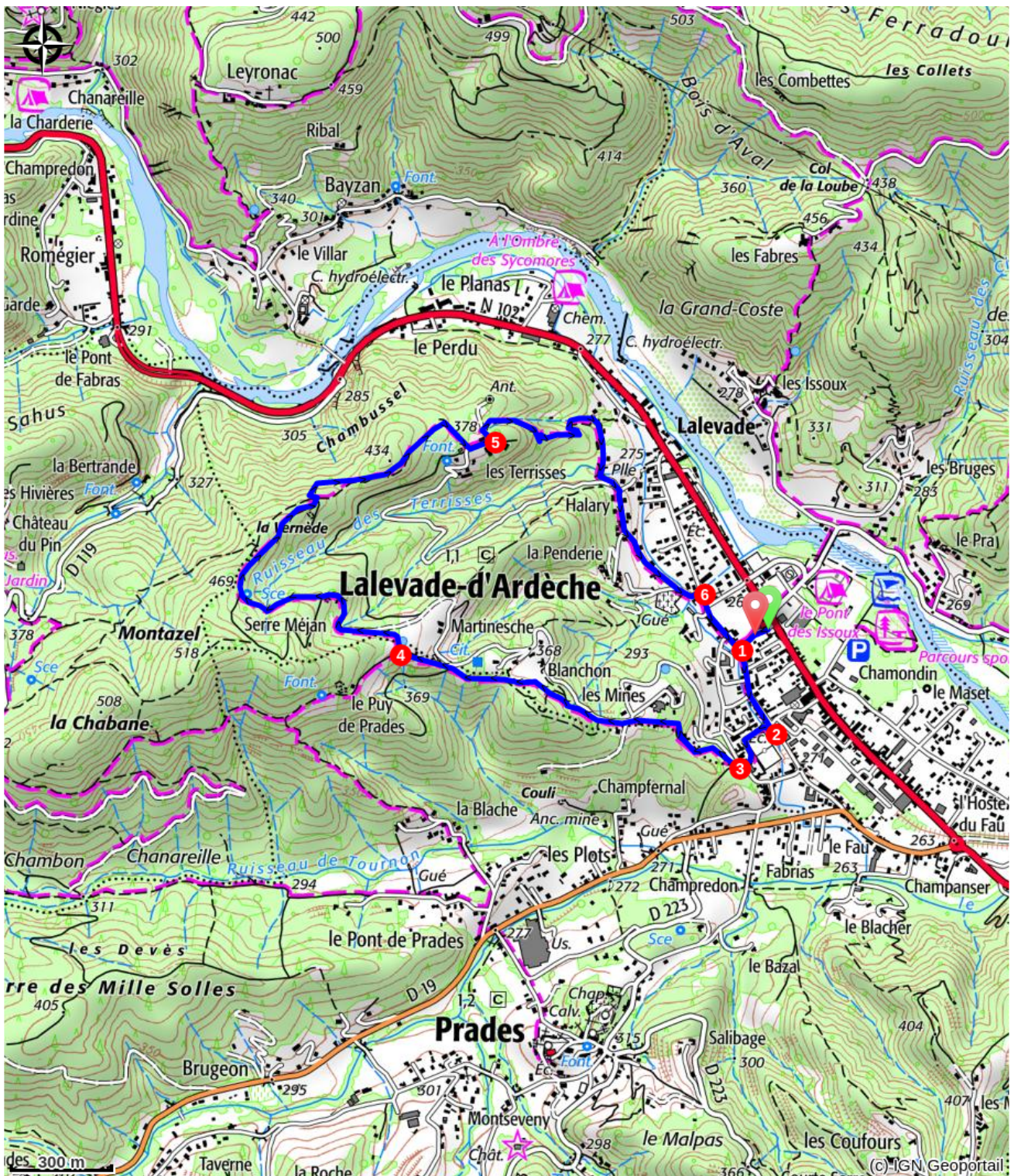
Arrival : Car park of the city hall

Markings : PR

Cities : 1. LALEVADE-D'ARDECHE 2. PRADES

Departure at the sign "INFO RANDO", on the square of the town hall.

- 1 Go up the street and turn left towards the rue des écoles to the stadium
2. Go up the street that runs along the stadium, pass in front of the barracks of the fire station.
3. Shortly after, leave the road to take the track on the left that engages in pines and then chestnut trees. You will observe a very beautiful panoramic view of the Salyndre valley and the village of Prades. Continue up the trail to the hiking post Martinesche.
4. You are in Martinesche, follow the trail on the right. Continue the path to rejoindre the hamlet of Terrisses.
5. Cross it from the left and take the trail on the right. Pass in front of the cemetery
- 6 At the intersection of Rue des Écoles, turn right. Walk past the church and reach the starting point.



! Advices

The loop is marked with yellow and white paint. 

How to come ?

Access

Aubenas, take the N102 to Lalevade d'Ardèche. Thueyts, take the N102, cross Pont-de-Labeaume then Lalevade d'Ardèche.

Advised parking

Town hall square

 **Information desks**

Tourism Office

tourisme@sourcesvolcans.com

<https://sourcesvolcans.com>