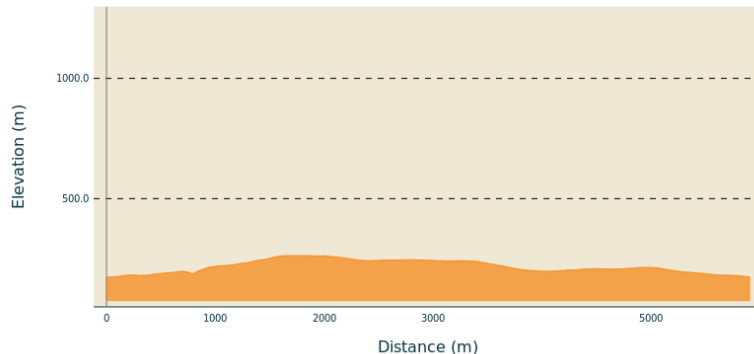


Le Bois de Bruyères

Gorges de l'Ardèche - SALAVAS

Altimetric profile



Min elevation 174 m Max elevation 263 m

Useful information

Practice : Hike

Duration : 1 h 50

Length : 5.9 km

Trek ascent : 125 m

Difficulty : Easy

Type : Loop

Themes : Fauna - Flora, Géologie

Trek

Departure : Gour d'Estelle, on the road to Barjac

Arrival : Gour d'Estelle, on the road to Barjac

Markings :  PR

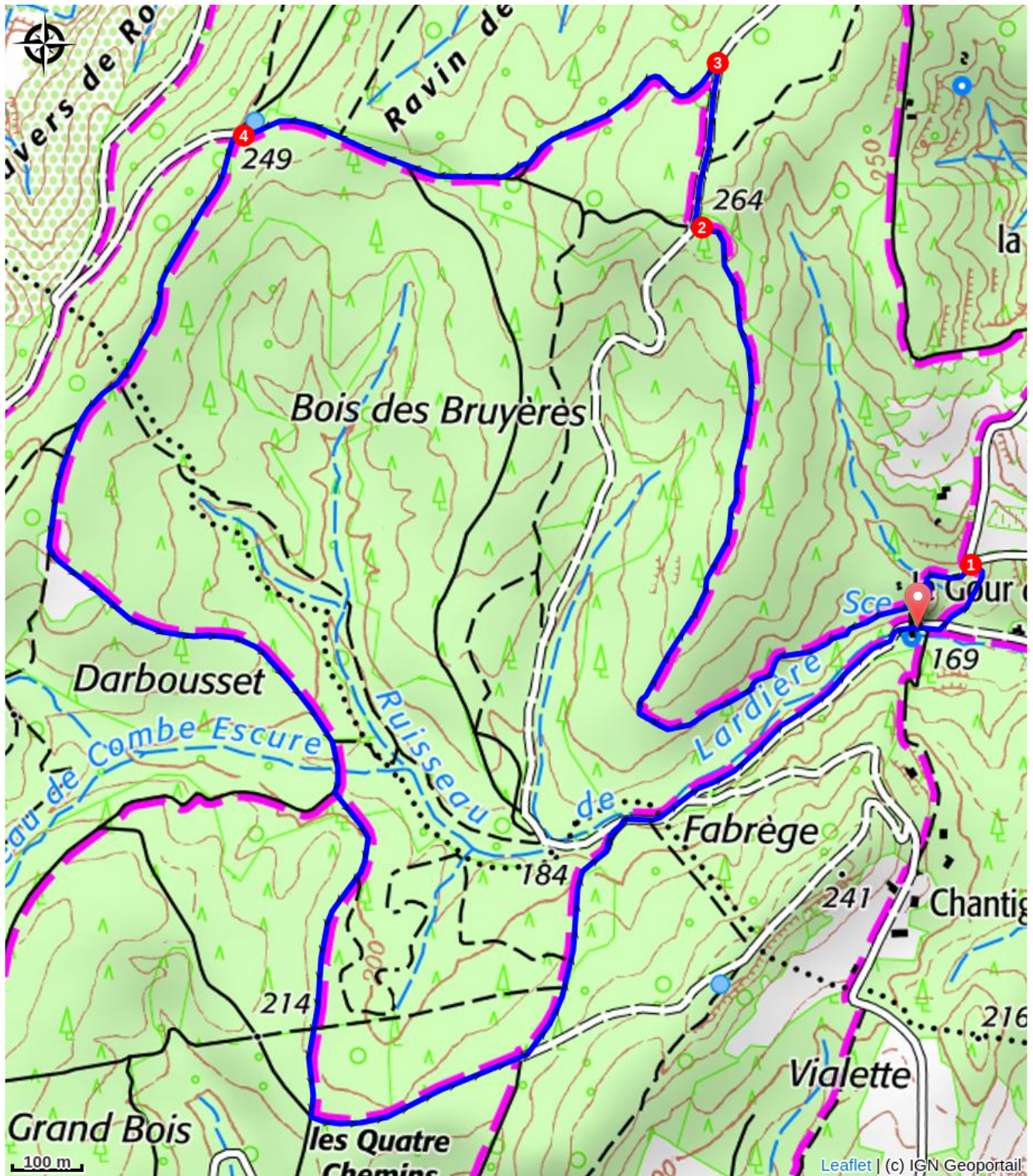
Cities : 1. SALAVAS 2. VAGNAS

To start the walk, follow Salavas for 4.2 km. Go up a path and join a tarmac road and a fork in the road.

1. At the junction La Brulade L'Epingle 2.8 km / Salavas 6.7 km Take a track into the woods. The path becomes a footpath and climbs through the forest. At a bread oven, continue uphill.
2. At the next crossroads, turn right onto a wide, uphill carriageway.
3. At the next crossroads, turn left and take the same wide track as far as the Le Bois des Bruyères junction. Follow signs for Gour d'Estelle 3.2 km and Salavas 7 km. Continue on this main road to the Darbousset junction; continue on a wide track.
4. At the next crossroads, fork left, then turn left again at the next junction. Go down a track and at the next crossroads turn right onto a gently sloping path that leads to the Gour d'Estelle crossroads, the starting point of the tour.

In Occitan, "darboçier" means strawberry tree. This shrub is very common in the south of France. Its fruit, called arbouse (or Chinese strawberry) is edible, has no strong taste and is rich in vitamin C. It can be eaten raw, but is

slightly toxic, and too much of it can cause mild colic. It can also be used to make jams and pastries, or fermented to produce an alcoholic beverage. follow Gour d'Estelle 1.9 km Salavas 5.6 km



How to come ?

Access

From Vallon Pont d'Arc, take the D579 towards Barjac (over the Salavas bridge) and after 2.5km, turn right towards Gour d'Estelle. At the Gour d'Estelle crossroads, park.

Coming from Barjac, drive through Vagnas towards Vallon-Pont-d'Arc. After the junction with the D217, continue towards Vallon Pont d'Arc and after 1.2 km, turn left at the bend, towards Gour d'Estelle.

Advised parking

Gour d'Estelle crossroads



Information desks

Office de Tourisme Gorges de l'Ardèche - Vallon-Pont-d'Arc

info@gorges-ardeche-pontdarc.fr

Tel : +33 (0)4 75 54 54 20

<https://www.gorges-ardeche-pontdarc.fr>