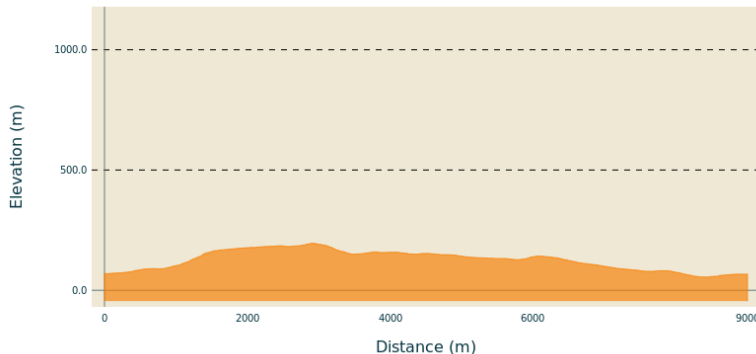


The great path of the Capitelles

Gorges de l'Ardèche - BOURG-SAINT-ANDEOL

Altimetric profile



Min elevation 55 m Max elevation 195 m

Useful information

Practice : Hike

Duration : 2 h 45

Length : 9.0 km

Trek ascent : 173 m

Difficulty : Easy

Type : Loop

Themes : Fauna - Flora, Patrimoine historique et religieux, Patrimoine bâti

Trek

Departure : Tourist Office - Place du Champs de Mars

Arrival : Tourist Office - Place du Champs de Mars

Markings :  PR  GR

Cities : 1. BOURG-SAINT-ANDEOL

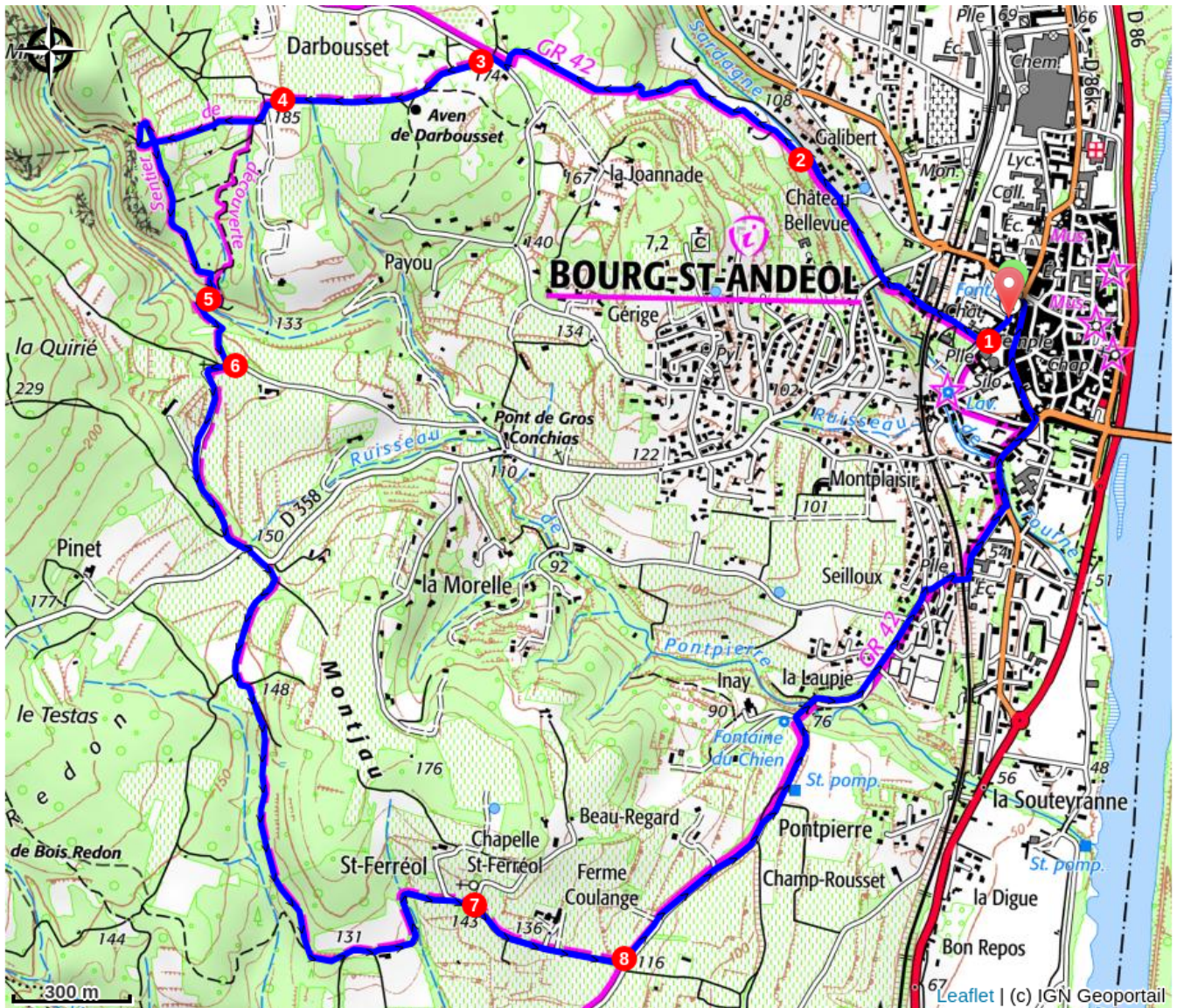
When you see the hiking information sign behind the Tourist Office, turn left onto Avenue Marc Pradelle.

1. At the first intersection, turn right onto Chemin Saint-André (you are now on the GR42, marked white/red). See the sign on the park wall and follow the signs for "Darbousset 1.8 km." Cross the bridge over the railway and continue on this road, which becomes a path and passes under a bridge. You will then see the Château de Bellevue on your left. Continue straight ahead and stay on the GR42.
2. After passing a few houses, turn left to cross to the other side of the stream onto a wide path that turns into a trail that climbs quite steeply. After a 1 km climb, a beautiful view of the Rhône Valley awaits you. When you reach the paved road, turn right.
3. At the "Darbousset" signpost, leave the GR to take the PR. Follow the white/yellow markings and follow "Bourg-Saint-Andéol 7.5 km." Continue on this wide path for 600m.
4. When you reach a fork, turn left, descend toward the signpost, and follow the signs for "Croix de Romanet 1.8 km" on the right to follow the vineyard. You will come to a shelter on your left (somewhat hidden by vegetation). *!/* These shelters, built of dry stone, are fragile. Entering them is at your own risk! Be careful not to damage them. Take the path between the vineyard and the trees, then continue straight ahead. At the end of the vineyards, go back up to your right through the undergrowth to reach another shelter. From there, turn left. When the path leaves the woods and opens onto a farm track, follow it to the right for 50m to the next signpost. There, turn right towards "Croix de Romanet," onto the path that descends. After about 250 meters, turn right; the path descends steeply to the bottom of the valley.
5. Cross the stream and take the path opposite that climbs to the right. At the top of the valley, turn right onto the well-marked farm track until you reach the road and the signpost "Croix de Romanet."
6. From Croix de Romanet, follow "Coulange 3.1 km" by the small road. When it opens onto the D 358, cross and take the path opposite. The route can be difficult for a few meters, until you reach a farm track to take to the right. At the first fork, go left; and at another fork, 100 m further, go right. A pretty path through the

undergrowth leads you to a farm where you take a small tarmac road that descends under the trees, turns left then right and joins another. At the junction, climb to the right.

7. Shortly after, a short round trip allows you to see the Saint-Ferréol chapel on the left. Past the Domaine Coulange, you join the GR42 at the junction with the Poteau Coulange. There, follow "Bourg-St-Andéol 2.8 km" by the GR 42 (white/red markings) to reach the Poteau Seilloux.
8. Turn left there and from Croix de Romanet, follow the small road to "Coulange 3.1 km." Continue down the street toward "Bourg-St-Andéol 1.4 km." Stay on Avenue de Lattre de Tassigny for about 750 meters, then

go down Rue des Tanneries Amblard (leaving the signposts at the Sainte Croix housing estate). Once you reach the washhouse, go up Avenue Marc Pradelle, which will take you back to the Champs de Mars.



How to come ?

Access

From Aubenas, take the N102 towards Lavilledieu. Follow the D107 towards Alba-la-Romaine, then take the D86 to Bourg-Saint-Andéol.

Advised parking

Champ de Mars Square

Information desks

Office de Tourisme Gorges de l'Ardèche - Bourg-Saint-Andéol

info@gorges-ardeche-pontdarc.fr

Tel : 0475545420

<https://www.gorges-ardeche-pontdarc.fr/>