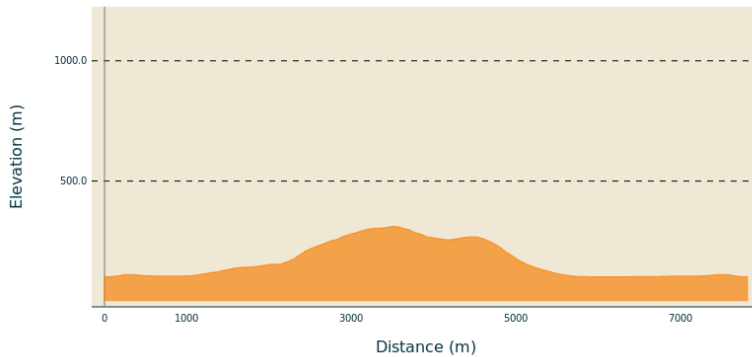


# The Coucouru

Gorges de l'Ardèche

## Altimetric profile



## Useful information

Practice : Hike

Duration : 2 h 45

Length : 7.8 km

Trek ascent : 237 m

Difficulty : Medium

Type : Loop

Themes : Fauna - Flora, Sommet et points de vue, Patrimoine agricole

## Trek

**Departure** : Tourist Office - Vallon Pont d'Arc

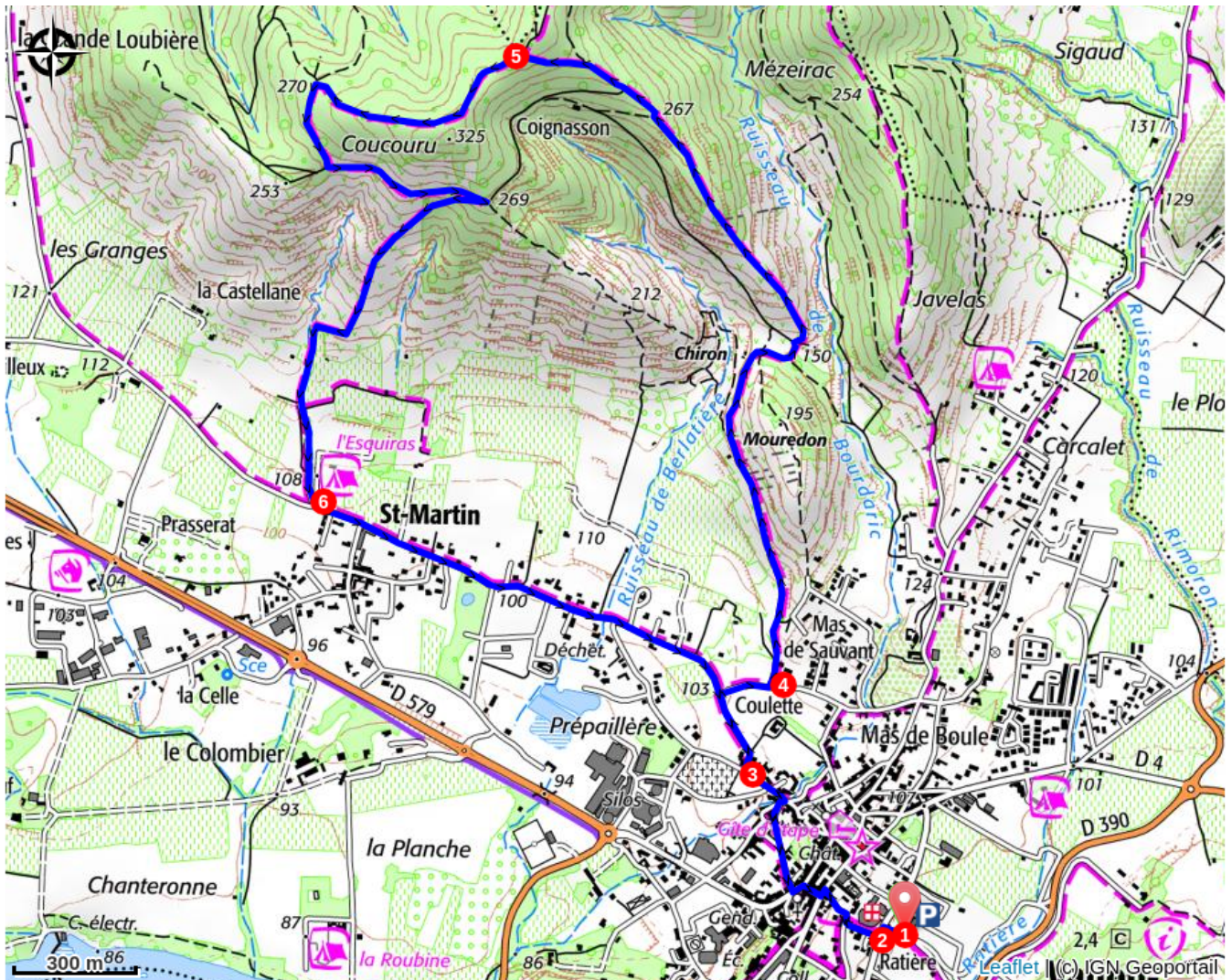
**Arrival** : Tourist Office - Vallon Pont d'Arc

**Markings** :  PR

Cities : 1. VALLON-PONT-D'ARC

1. From the Info Rando sign at the bus station opposite the Tourist Office, turn right towards the Vallon-Pont-d'Arc junction. Follow the signs for Coucouru 3.2 km Salavas 2.2 km
2. Follow the white and yellow signs up rue Louis Claron and continue towards Coucouru. When you see the hospital on your right, take the street that runs alongside it; turn left and then immediately right into rue des Maquisards. Opposite the temple, turn right. Continue until you reach the Bourdaric junction. follow Coucouru 2.6 km Ruoms 7.8 km
3. Just before the cemetery, turn right and follow the Chemin du Fez until you reach the Coulette junction. follow Coucouru 2.3 km
4. After 100 m, turn left onto a carriage road. Stay on the track around the hill. Just before the track rises and becomes very stony, turn right onto a path that climbs towards the summit of Coucouru.
5. At the Coucouru crossroads, follow signs for Vallon-Pont-d'Arc for 4.4 km. The name Coucouru comes from a very ancient root of Eastern European and pre-Gaulish origin: kuk, meaning "rounded height". Over the centuries it evolved into kok, kouk and couk. The same origin can be found in well-known names such as Coucouron and the Coucoulude rock above Valgorge. In this scrubland of holm oak, boxwood and juniper, the path is bordered in places by low drystone walls, evidence of former agricultural or pastoral use. As you leave the wooded area, you come out facing the Saint Martin plain. Turn left onto a track that offers a remarkable panorama. At the next crossroads, leave the track and take the small path furthest down on the right. This very steep path leads through the woods to the Saint-Martin junction.
6. Follow Vallon-Pont-d'Arc 2 km The tarmac road that crosses the Saint Martin plain passes through the Coulette junction. Follow Vallon-Pont-d'Arc 0.6 km Take the same route as before. At the corner of the

cemetery, turn left to reach the Le Bourdaric junction. Follow Info Rando Back through the village to the starting point.



## How to come ?

### Access

From Aubenas, take the D579 towards Vogüé, Gorges de l'Ardèche to Vallon-Pont-d'Arc.

From Bourg-Saint-Andéol, follow the signs to Vallon-Pont-d'Arc.

From Alès, take the D104 towards Aubenas. Then take the D111 towards Gorges de l'Ardèche until Vallon-Pont-d'Arc.

### Advised parking

Pay car park Esplanade du Soleil

## Information desks

### Office de Tourisme Gorges de l'Ardèche - Vallon-Pont-d'Arc

[info@gorges-ardeche-pontdarc.fr](mailto:info@gorges-ardeche-pontdarc.fr)

Tel : +33 (0)4 75 54 54 20

<https://www.gorges-ardeche-pontdarc.fr>