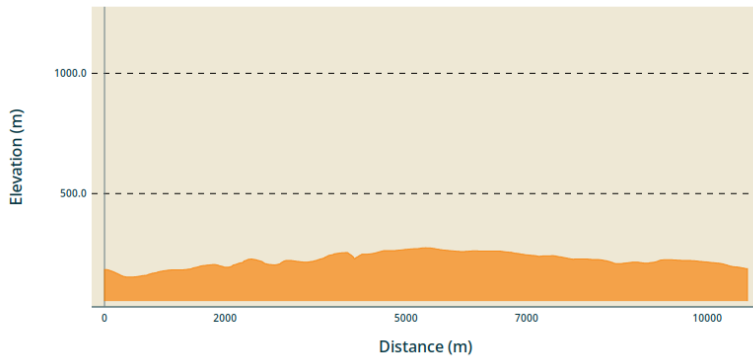


Chauzon and the Grads Plateau

Gorges de l'Ardèche

Altimetric profile



Min elevation 153 m Max elevation 275 m

Useful information

Practice : Hike

Duration : 3 h 45

Length : 10.7 km

Trek ascent : 218 m

Difficulty : Medium

Type : Loop

Themes : Fauna - Flora, Geology, Summit and viewpoints

Trek

Departure : Car park at the entrance to the village of Chauzon when approaching from Pradons

Arrival : Car park at the entrance to the village of Chauzon

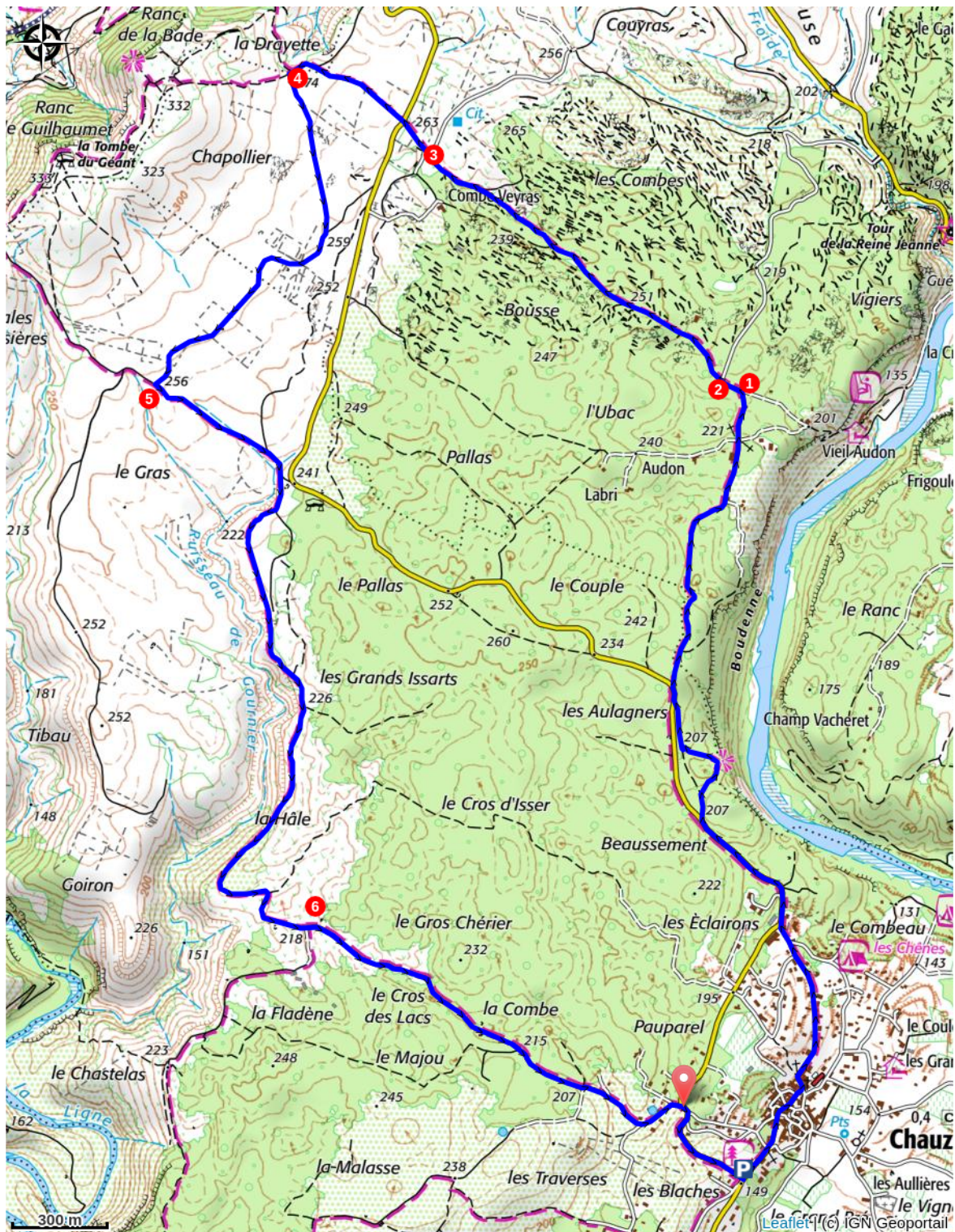
Markings :  PR

Cities : 1. CHAUZON 2. BALAZUC

Start at the Info Rando sign in the car park at the entrance to the village (coming from Pradons); as you leave the car park, head left towards the village. Keep following the signposts as you walk through the village. 300 m after the 'end of built-up area' sign, leave the road and take a path on the right. A few metres further on, leave the track briefly to take a path leading to the Aulagniers viewpoint, offering a remarkable view of the Ardèche. After a short stretch along the

road, take the track on the right. On reaching the hamlet of Audon, the track becomes tarmac.

1. At the signpost marked "Audon", follow "La Drayette 1.9 km – Uzer 3.7 km" to the left for 50 metres.
2. At the signpost marked "Lubac", follow "La Drayette 1.8 km – Uzer 3.6 km". Leave the tarmac track and take a path through the woodland straight ahead.
3. At the signpost marked "Combe-Veyras", follow "La Drayette 0.6 km – Uzer 2.4 km" straight ahead. 100 metres further on, cross a road and continue straight ahead on a dirt track, then turn left.
4. At the signpost marked "La Drayette", follow "Chauzon 6 km". Turn left onto the path between two walls. It leads onto a dirt track. Continue along this track, which crosses the plateau and passes through a remarkable array of dry-stone walls.
5. At the signpost marked "Le Gras", follow "Faussimagne 4.2 km – Chauzon 4.4 km" to the left. At a ruin by the roadside, continue along the track which runs alongside the Gournier (a stream that is usually dry) and then moves away from it.
6. At the "La Hâle" signpost, follow the sign for "Chauzon 1.8 km" straight ahead. Join a tarmac track and follow it until you reach a junction with a road. Turn right and head downhill to the starting point.



! Advices

Protect yourself from the sun. Avoid hiking when it is very hot.

🎒 Gear

Walking shoes, weather-appropriate clothing, a water bottle or hydration pack.

How to come ?

Access

From Ruoms or Vogüé, take the D579 to Pradons. At the traffic lights, turn towards Chauzon. The road bends to the right after the bridge. The car park is at the junction with the Route des Gras.

From the D104 between Aubenas and Rosières, take the small road towards Balazuc. Take the first right towards Chauzon. At the roundabout at the entrance to the village, take the first exit, follow the Route des Gras and, just before the T-junction with the Route des Blaches, park in the car park on the left.

Advised parking

At the junction of the Route des Blaches and the Route des Gras. (southern entrance to the village of Chauzon)



Information desks

Office de Tourisme Gorges de l'Ardèche - Ruoms

info@gorges-ardeche-pontdarc.fr

Tel : 0475545420

<https://www.gorges-ardeche-pontdarc.fr/>

Office de Tourisme Gorges de l'Ardèche - Vogüé

info@gorges-ardeche-pontdarc.fr

Tel : 0475545420

<https://www.gorges-ardeche-pontdarc.fr/>