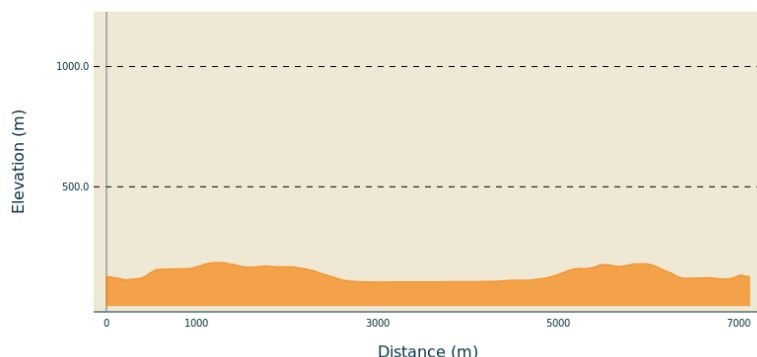


# In the footsteps of Alphonse Daudet from Labeaume

Gorges de l'Ardèche

## Altimetric profile



Min elevation 104 m Max elevation 186 m

## Useful information

Practice : Hike

Duration : 2 h 15

Length : 7.1 km

Trek ascent : 180 m

Difficulty : Medium

Type : Loop

Themes : Agricultural heritage, Built heritage, Lake - River - Waterfall

## Trek

**Departure** : Hiking information board near Place des Faysses, 07120 Labeaume

**Arrival** : Hiking information board, Labeaume

**Markings** :  PR

Cities : 1. LABEAUME 2. SAINT-ALBAN-AURIOLLES

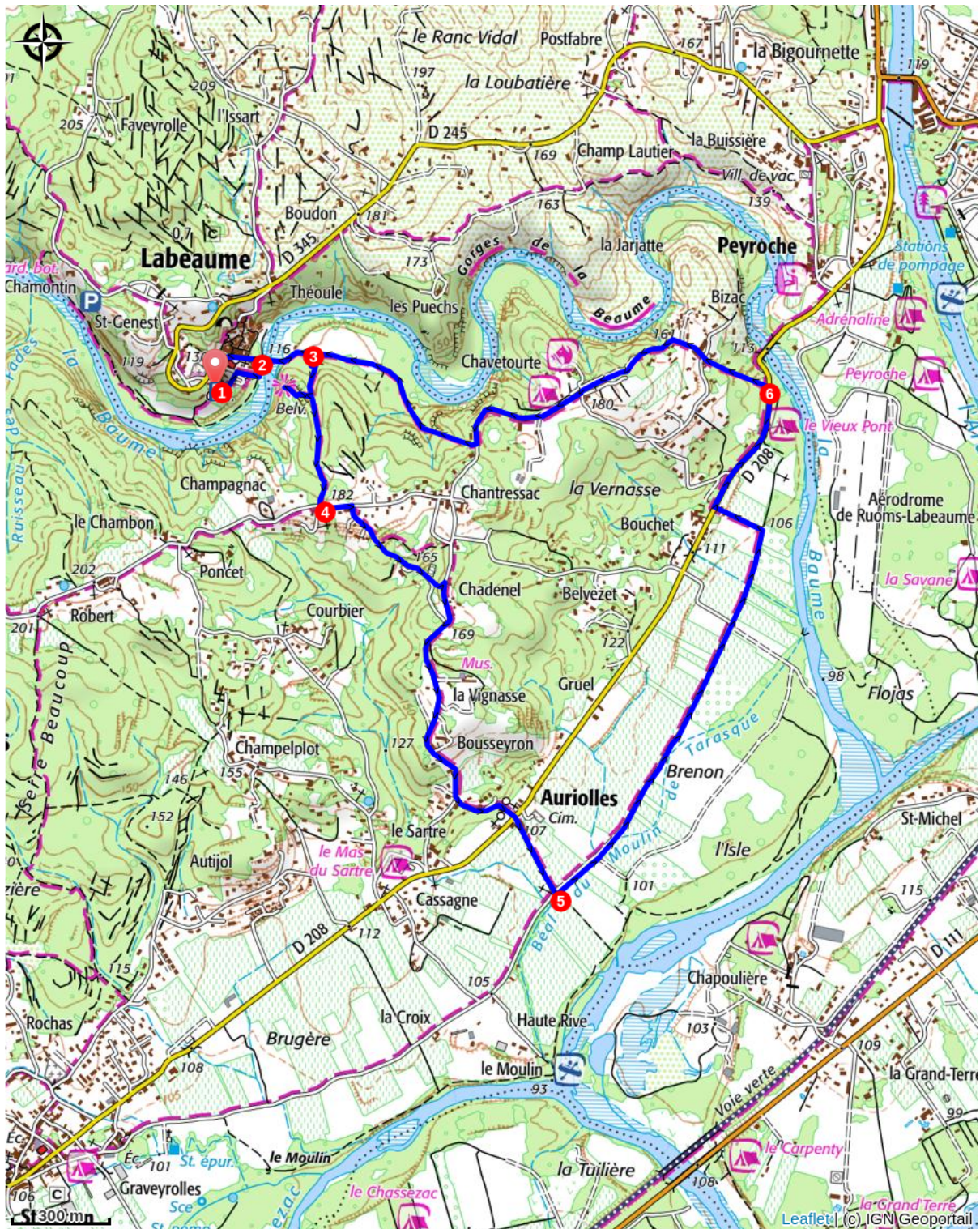
Start from the car park at the Labeaume information point (near the village)

When you are facing the "INFO RANDO" sign, turn right.

1. At the nearby hiking signpost marked "Les Faïsses", follow the signs for "Musée Daudet 1.8 km / Viewpoint 0.6 km". To do this, head downhill, keeping the car park on your right, then follow the river towards the bridge and follow the signposts.
2. At the signpost: "LE SABLAS", follow: "Musée Alphonse Daudet 1.6 km / St Aban Auriolles 3.9 km". Cross the submersible bridge and follow the road, which turns into a track.
3. At the signpost: "LA BEAUME", follow "Alphonse Daudet Museum 1.4 km / St Aban Auriolles 3.7 km". Then, head up a concrete path, formerly paved with small pebbles. On the way up, a sign points to the Labeaume viewpoint on the right. Don't miss this short round trip to admire the exceptional view of the village! Then return to the concrete path and continue climbing until you reach the road.
4. At the signpost marked 'CHAMPAGNAC', follow the signs for 'Musée Alphonse Daudet 0.9 km / St Aban Auriolles 3.8 km'. Take the road to the left, then 60 metres further on, turn right into Impasse des Fraysses. At a left-hand bend, take the path opposite and follow it for 400 metres. At the junction with a road, turn right and follow it to Mas Daudet. You can take a break in its lovely grounds; or, even better, visit the museum. There you'll learn a great deal about the lives of the people of the Ardèche in days gone by, as well as about the work of Alphonse Daudet. This was the home of his maternal ancestors. Then continue along the road. After passing a magnificent olive grove planted in the 19th century, take the first road on the left to reach the hamlet of Auriolles. Cross the D208 road.
5. At the signpost marked 'LE BEAL', follow 'Ruoms 4.3 km' to the left. Fruit orchards line the path. It is forbidden to pick the fruit, or you'll risk upsetting the farmer who grows it! At the second junction, turn left and join the D208. Turn right.
6. At the signpost marked 'LE VIEUX PONT', follow : 'Labeaume 2 km', heading left. Climb up a stony path until you reach a tarmac road. Turn right; after 100 m, take a path leading to the Chavetourte campsite.

Walk alongside the campsite along a track; then, after about 400 m, leave the tarmac road by turning right onto a path that descends steeply across terraces to join a flat track running along the right bank of the River Beaume. At the signpost marked "LA BEAUME", "follow Labeaume 0.2 km", go straight on. Once

you've crossed the bridge, the village and its tree-lined square invite you to stop for a visit and a refreshment. Rue F Chamontin will take you back to near the starting point.



### ! **AdVICES**

Set aside a little time and energy to visit the village.



Good walking shoes, a hat, a water bottle and possibly walking sticks. A towel and swimwear if the weather is suitable for swimming.

## How to come ?

### Access

From Ruoms or Saint-Alban-Auriolles, leave the D208 and take the D245 towards Labeaume. Once you reach the bottom, park in the car park on the right (pay-and-display in summer).

### Advised parking

Large car park near Place des Faysses (pay-and-display in summer) or Place de la Paix

## Information desks

### Office de Tourisme Gorges de l'Ardèche - Ruoms

info@gorges-ardeche-pontdarc.fr  
Tel : 0475545420  
<https://www.gorges-ardeche-pontdarc.fr/>

### Office de Tourisme Gorges de l'Ardèche - Vallon-Pont-d'Arc

info@gorges-ardeche-pontdarc.fr  
Tel : +33 (0)4 75 54 54 20  
[https://www.gorges-ardeche-pontdarc.fr](https://www.gorges-ardeche-pontdarc.fr/)

### Office de Tourisme Gorges de l'Ardèche - Vogüé

info@gorges-ardeche-pontdarc.fr  
Tel : 0475545420  
<https://www.gorges-ardeche-pontdarc.fr/>